

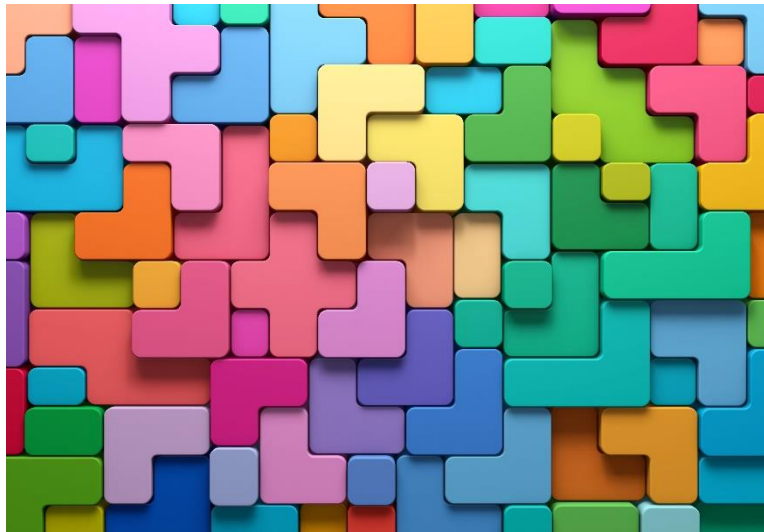


National Child & Family
Hubs Network

The National Child and Family Hubs Network



Child and Family Hubs core components



Community level:

- A welcoming and safe space for families
- Participatory approaches to service design and implementation
- Ongoing family/community input and involvement in governance
- Strong links with community services outside of the Hub

Service level:

- High quality services with quality frameworks and standards
- Relational practice/family centre care
- Workforce development and ongoing support
- Local leadership and administration to support integration
- Coordination/Navigation/Link staff
- A focus on social determinants of health
- A multi-disciplinary approach
- Mapped referral processes

Individual/family level:

- Outreach services to connect high need families
- Culturally safe policies and practices
- Support to build parenting capacity

Priority areas to build and scale Hubs over next 2-5 years



Invest in the National Child and Family Hubs Network



Secure long-term funding to support Hubs



Build workforce capability and culture



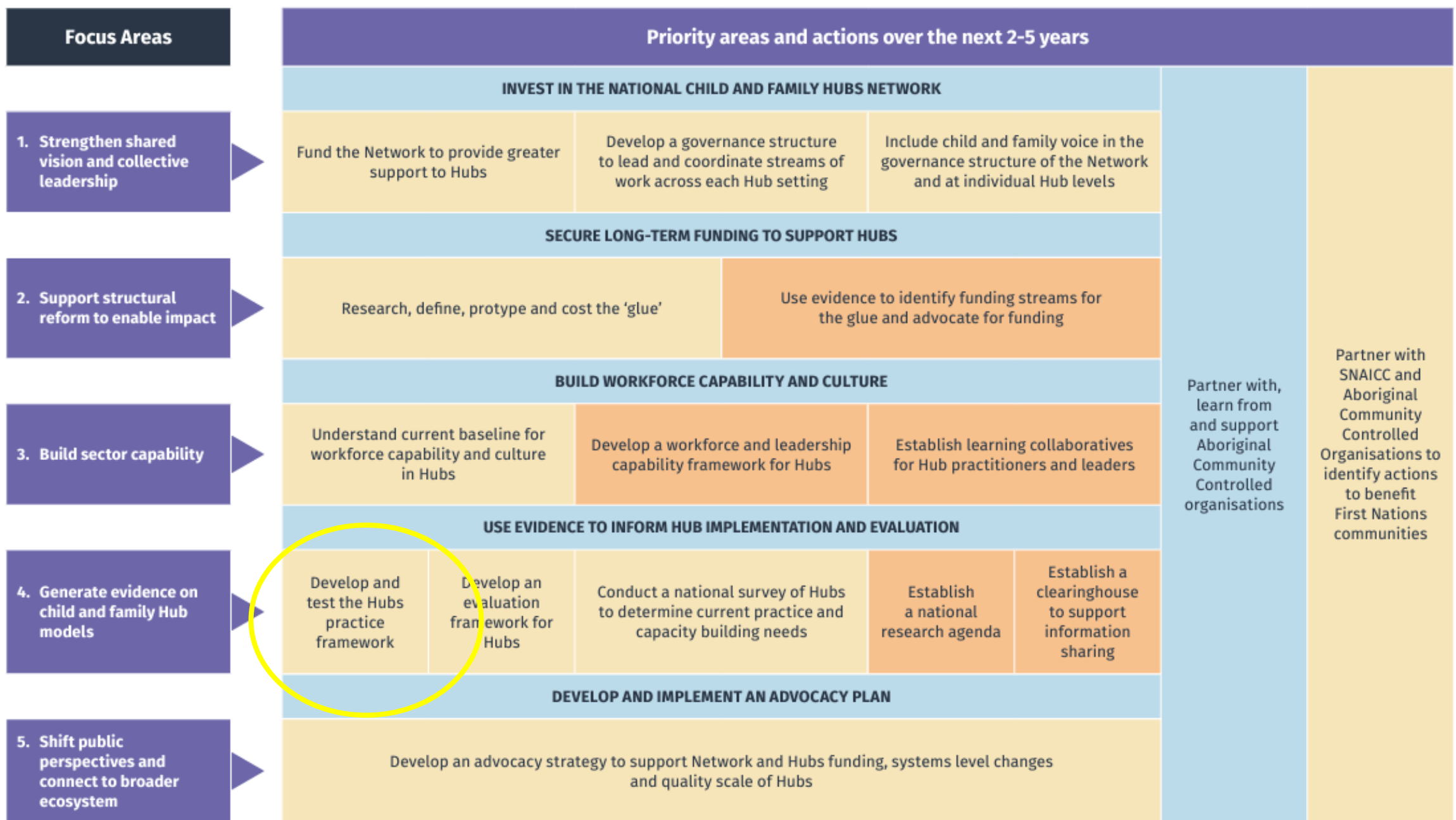
Use evidence to inform Hub implementation and evaluation



Develop and implement an advocacy plan



Partner with, learn from and support Aboriginal Community Controlled Organisations



Actions for the next 2 years (e.g. Fund the Network to provide greater support to Hubs)

Actions for the next 3 - 5 years (e.g. Use evidence to identify funding streams...)



designed to help your organisation promote the value of Child and Family Hubs and advance the National Child and Family Hub Network's collective priorities and advocacy efforts....

'...the Child and Family Hubs idea is really the hidden prevention and early intervention opportunity that I think all governments are currently looking for.'

Anne Hollonds
National Children's Commissioner



Take a photo of your Hubs, tell us about your great work!!





Child and Family Hubs website

