



Thrivning Queensland
Kids Partnership
connect • catalyse • learn



every child thriving
aracy

Launch of the Child and Family Hubs Framework

December 2024



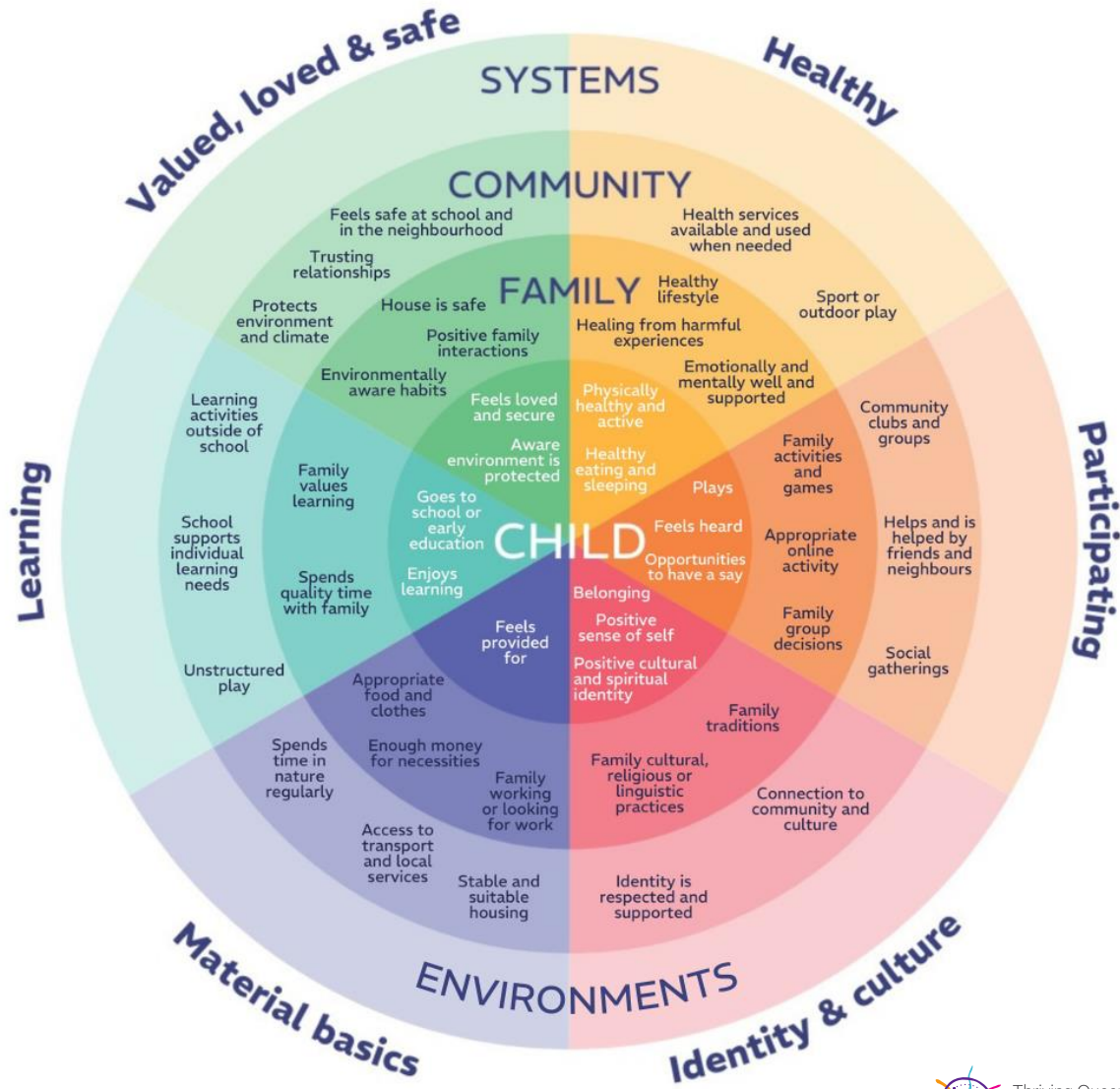
What is Thriving Queensland Kids Partnership?

TQKP is a systems-focused intermediary.

Our purpose is to ‘change the odds for young Queenslanders to thrive’.

We take an ecological and ‘all systems’ view, based on ARACY’s *The Nest* framework.

TQKP brokers, facilitates and affiliates through partnerships and collaborations.



About the Framework

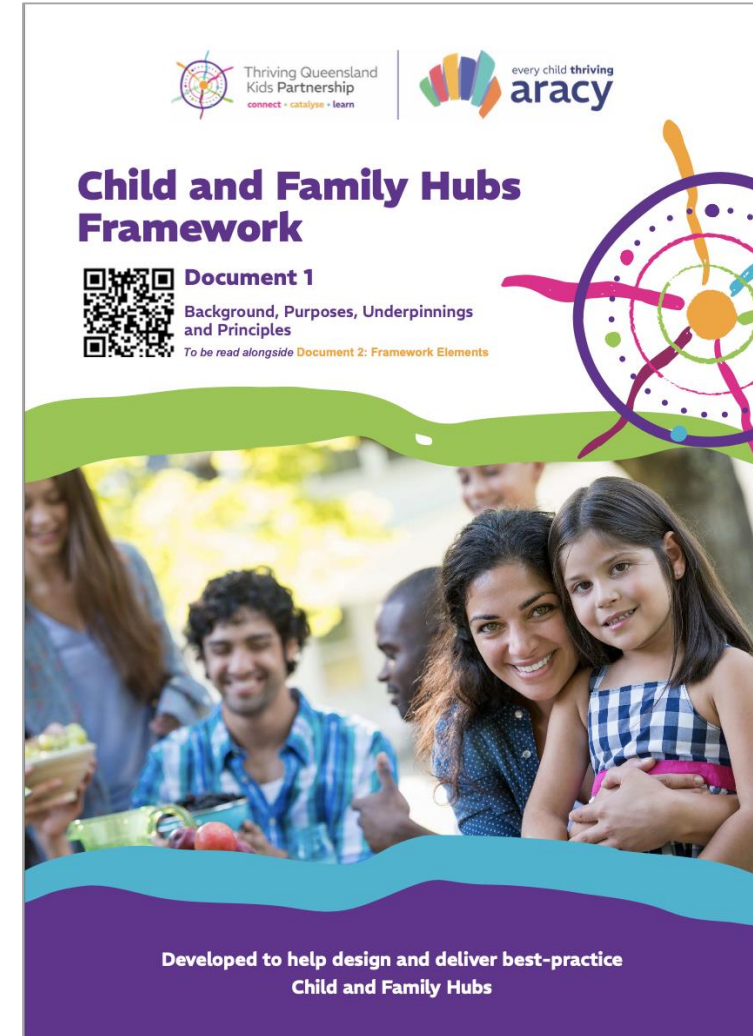
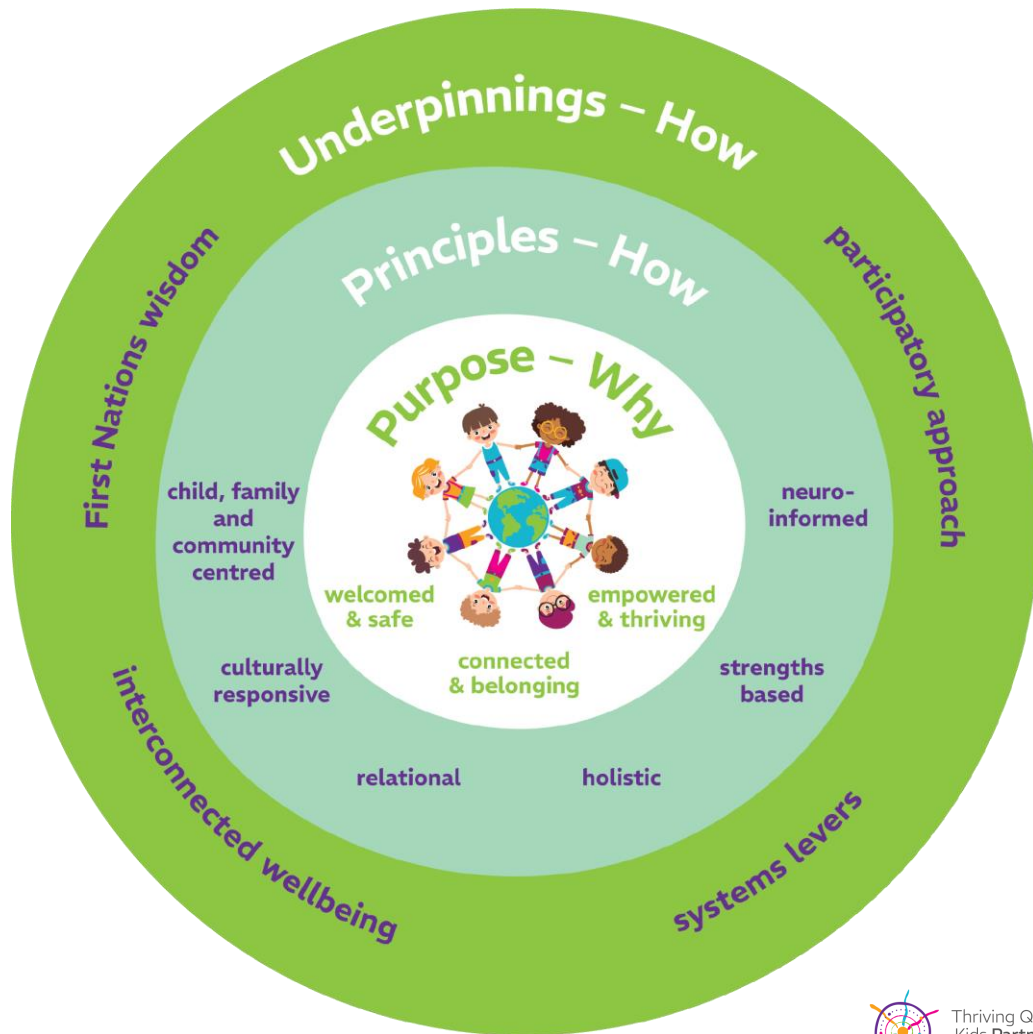


- ✦ Co-funded with **The Bryan Foundation**
- ✦ Facilitated by **TQKP**, in collaboration with **National Child and Family Hubs Network**
- ✦ Synthesizes evidence, expertise and experience:
 1. Enhance **partnerships and connections** among key child and family development-focused agencies and practitioners
 2. Foster a **common language, understanding** and **tools** across and within child and family hubs
- ✦ Consultation with more than **160 people**
- ✦ Divided into **two inter-related documents**

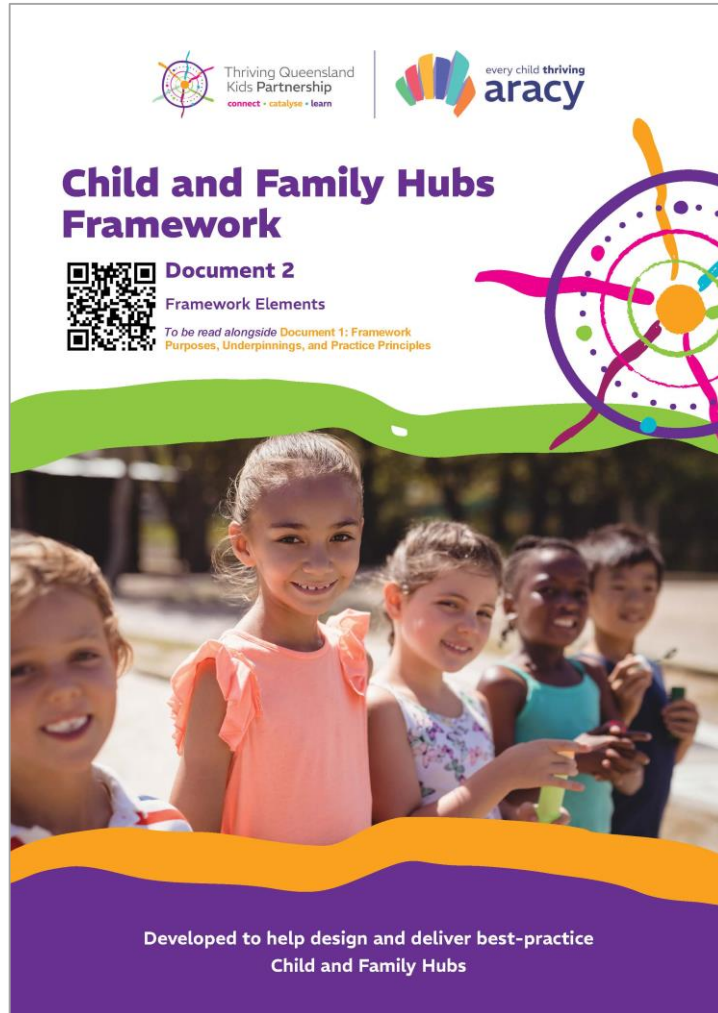


2-part Child and Family Hubs Framework

Document 1



2-part Child and Family Hubs Framework



Document 2

Elements – What

partnership
development &
management

soft & hard
structure

services &
program mix

funding

recruitment,
support &
professional
development

strategy &
planning

relationship to
the local
community

information &
reporting
requirements

shared
knowledge,
skills, frames,
tools &
processes

leadership &
governance

How to Access the Framework



The screenshot shows the website header with the logo and navigation menu. The main content area features a blue banner for 'Child & Family Hubs' and a white box with a welcome message and a list of topics.

Thiving Queensland Kids Partnership
connect • catalyse • learn

ARACY

Search...

What We Do ▾ Who We Are ▾ Join Us ▾ News & Events ▾ Contact Us Learning Hubs ▾

Learning Hubs

Child & Family Hubs

Welcome to the Thiving Queensland Kids Partnership Child & Family Hubs Learning Hub.

This page collates information to support Child & Family Hubs including:

- **What are Child & Family Hubs?**
- **Hubs in Queensland (including mapping)**
- **Newly developed Child & Family Hubs Framework documents**
- **Supporting the work of the National Child and Family Hubs Network**



[www.tqkp.org.au/
child-family-hubs](http://www.tqkp.org.au/child-family-hubs)